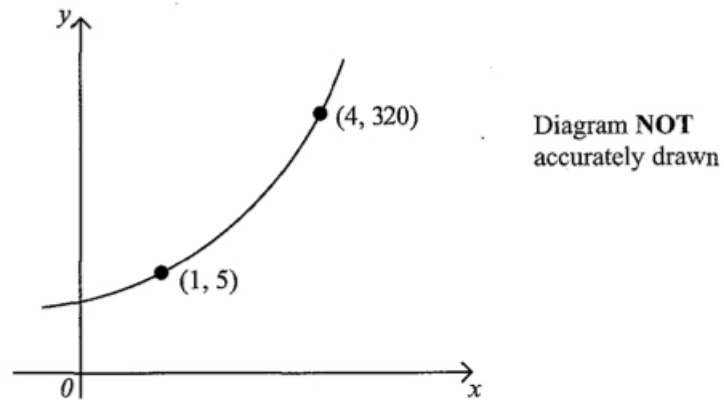


Dr Oliver Mathematics
Worked Examples
Curve with equation $y = pq^x$

From: Edexcel 2005 November Paper 6H (Calculator)

1. The sketch graph shows a curve with equation $y = pq^x$. (3)



The curve passes through the points $(1, 5)$ and $(4, 320)$.
Calculate the value of p and the value of q .